



# ADVANCED TISSUE-MANAGEMENT

The easy way to aesthetics.

PARASORB® Cone

PARASORB® Cone Genta



# ▶ TOOTH EXTRACTION – THE PROBLEM

After an extraction, the alveolar socket does not always heal optimally without special treatment. This has consequences:

- ▶ The bone required for a stable and secure fixation of an implant is only inadequately remodelled.
- ▶ Alveolar ridge deficiencies already start a short time after extraction. A reconstruction of the alveolar ridge is necessary if an implant is to be positioned at a later time.
- ▶ Treatments are costly and time-consuming for the patients as well as being painful and not completely without risk.

## The 4-in-1 solution by RESORBA®

### 1. Safe and rapid haemostasis

- ▶ No risk of secondary bleeding
- ▶ Stabilisation of the blood clot
- ▶ Optionally comes with antibiotic protection for high-risk patients (e.g. smokers, diabetics, immune-suppressed patients)

### 2. Reduction of alveolar ridge atrophy

- ▶ Stabilisation of the socket and maintenance of the sensitive vestibular lamella
- ▶ Volume stability of the alveolar process
- ▶ Improvement of the aesthetic and functional long-term results

### 3. Reliable bone regeneration

- ▶ Defined regeneration matrix
- ▶ Angioconductive and osteoconductive properties
- ▶ Already after a relatively short time, a stable bony implant site is formed
- ▶ More easily predictable long-term success

### 4. High user and patient satisfaction

- ▶ Simple and safe technique
- ▶ Subsequent treatment steps are simplified
- ▶ Higher patient comfort
- ▶ Excellent value for money

## The difference: PARASORB® Cone / PARASORB® Cone Genta



Schematic representation of the healing patterns after extraction:

Left:  
Untreated alveolar socket

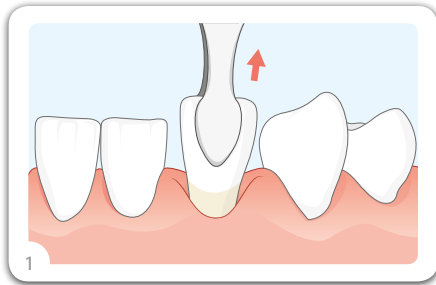
Right:  
Socket treated with  
RESORBA® dental cone

# RESORBA® DENTAL CONES

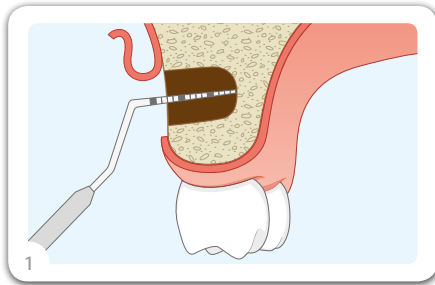
## What experience has there been with RESORBA® dental cones?

The use of collagen products for the augmentation and preservation of bone substance has been part of standard therapy in dentistry and oral and maxillofacial surgery for many years. The fact that RESORBA® dental cones have been used hundreds of thousands of times confirms the efficacy and reliability of these products. The same applies to the other proven dental products from RESORBA®, such as, for example, PARASORB® Fleece and PARASORB® Fleece Genta HD sponges and RESORBA® suture material.

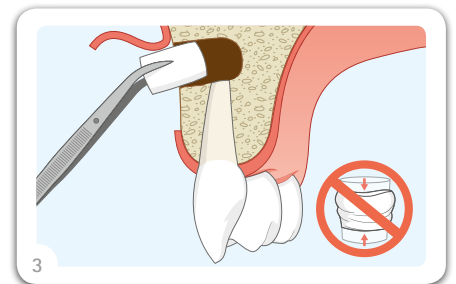
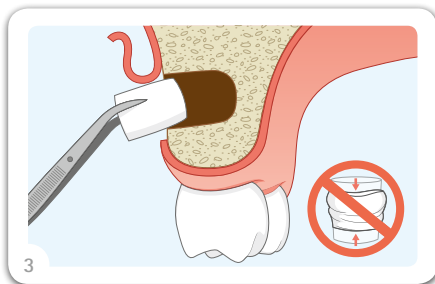
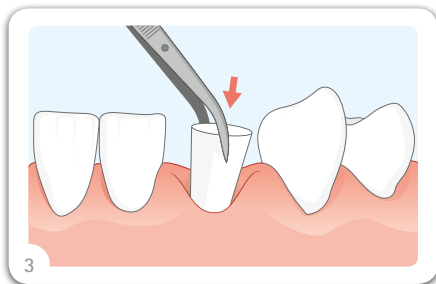
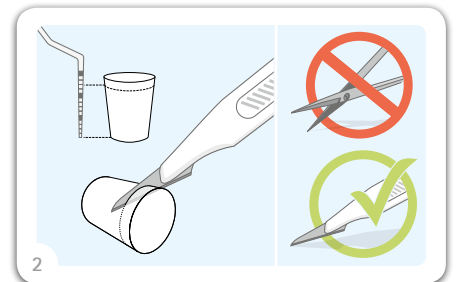
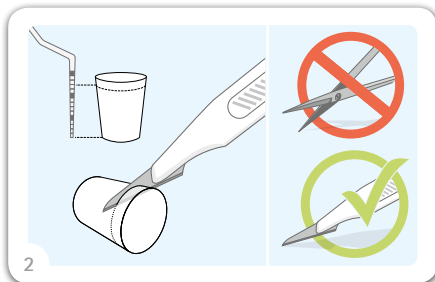
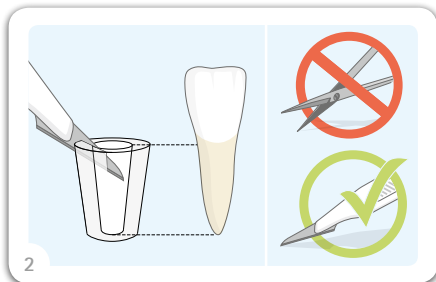
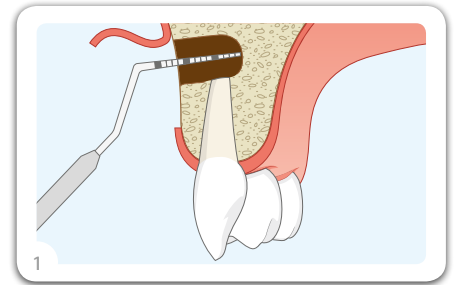
Use of RESORBA® dental cones in extraction



Use of RESORBA® dental cones in cystectomy



Use of RESORBA® dental cones in apicoectomy



## How supplied and Pack Sizes

PARASORB® Cone / PARASORB® Cone Genta, sterile packed, are available in the following pack sizes:

REF		Units
DK1010	PARASORB® Cone Single sterile packed	10 Cones
MK10	PARASORB® Cone Genta Single sterile packed, with antibiotic protection	10 Cones
MK11	PARASORB® Cone Genta Double sterile packed, with antibiotic protection	5 Cones



# How supplied and Pack Sizes

PARASORB® Cone / PARASORB® Cone Genta, sterile packed, are available in the following pack sizes:

REF		Units
DK1010	<b>PARASORB® Cone</b> Single sterile packed	10 Cones
MK10	<b>PARASORB® Cone Genta</b> Single sterile packed, with antibiotic protection	10 Cones
MK11	<b>PARASORB® Cone Genta</b> Double sterile packed, with antibiotic protection	5 Cones



RESORBA Medical GmbH, Am Flachmoor 16, 90475 Nürnberg, Germany  
Tel. +49 9128 / 91 15 0 Fax +49 9128 / 91 15 91 infomail@resorba.com  
www.resorba.com